

Ellen Jantzen

27800 McBean Parkway • Studio #319 • Valencia, CA 91354  
661 513-9915

www.etavonni.com  
ellen@etavonni.com

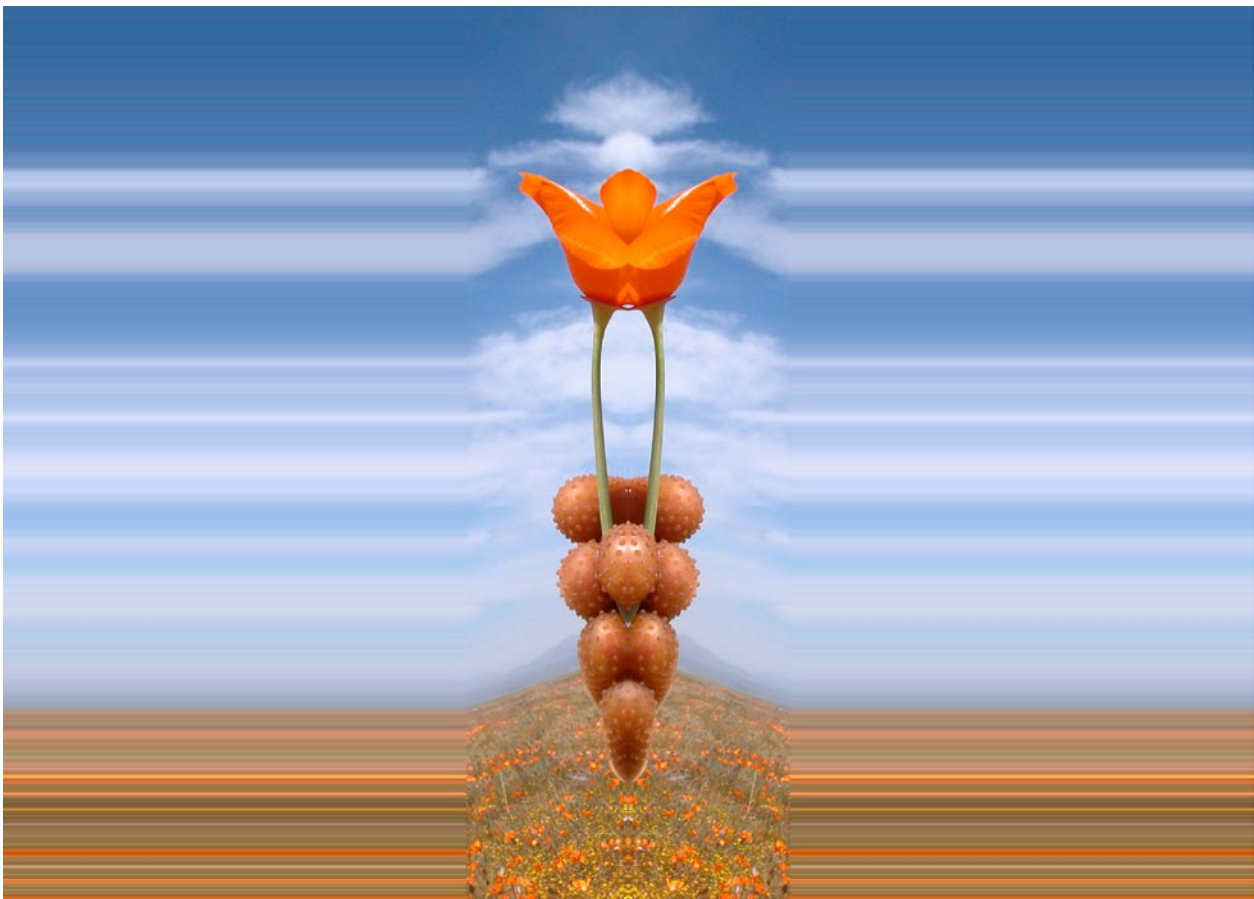
## *Artificial Evolution*

This work features “hybrid” flower forms

Being inspired with the natural world has led me to explore the issues of GMO’s (genetically modified organisms) with their creation of Chimera-like new life forms and “Intelligent Design” with it’s slant on evolution being designed by a creator. I am using the features of modifying and design to create new imagery. Along with my interest in nature, I find the digital world of computer technology compelling and am drawn to the juxtaposition of its reality with the natural world.

This new work sometimes entails site specific photography where I stage arrangements of natural organisms (specifically flowers) with either man-made or other natural elements. I take digital photographs of these ephemeral assemblages, then using my computer I create my hybrid forms. Working digitally with my computer allows me to see in new ways; it allows me to be surprised by the outcome and the possibilities.

I title each image as if it were a new life form



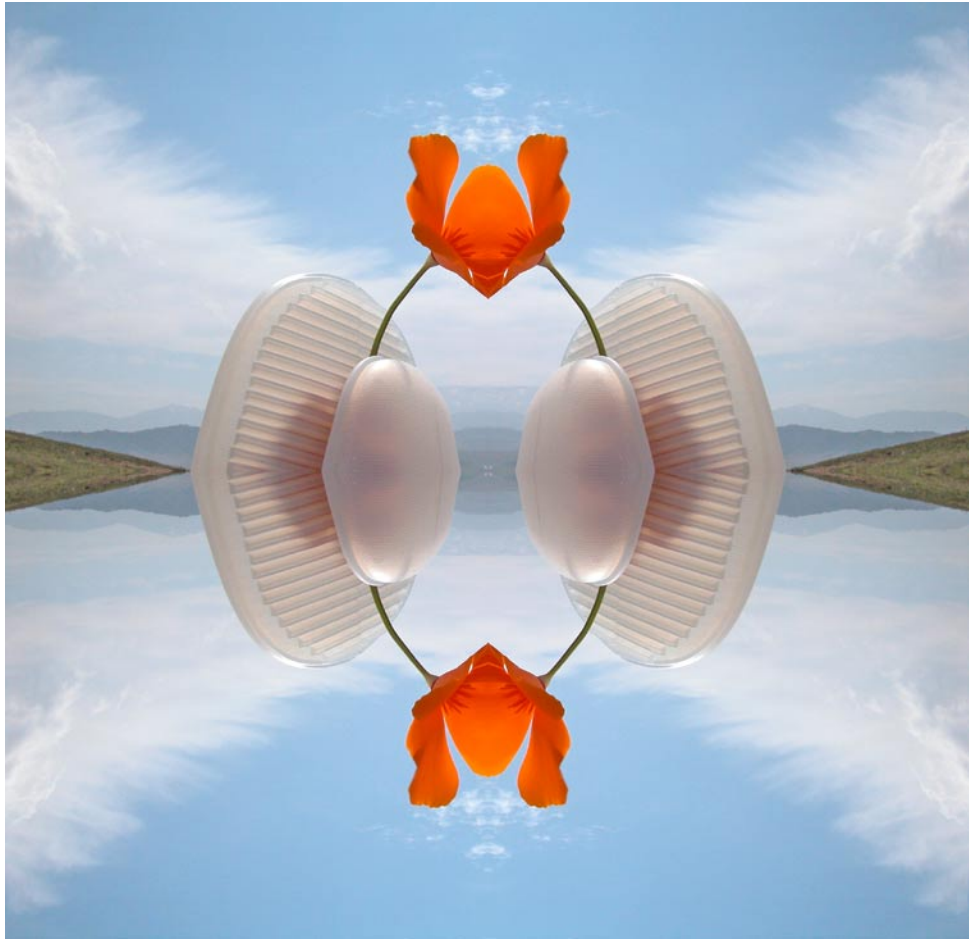
*Papaver articultus*



*Carpio kallos, Hybrid 1*



*Carpio anthemom*



*Chirotheca papaver*



*Floris pollicaris*





*Papaver cuspis*



*Recombinant One*



*Calla lappa*



*Calla pomifera x*